

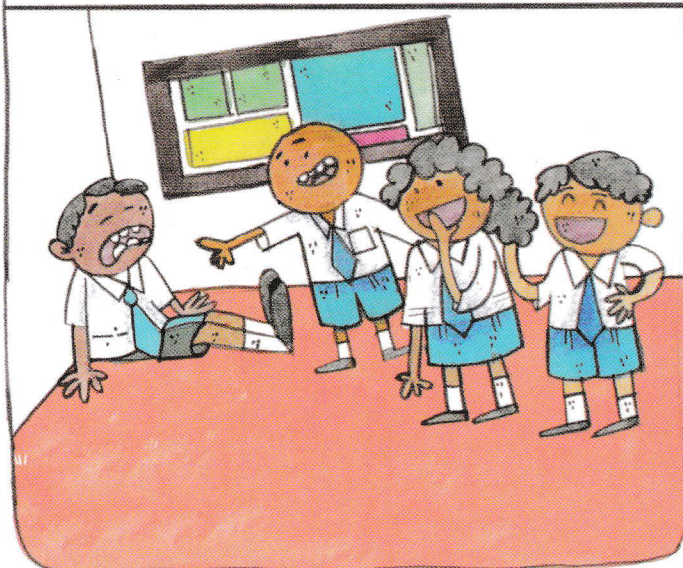
MYTH: HOUSEHOLD CHORES ARE WOMEN'S WORK



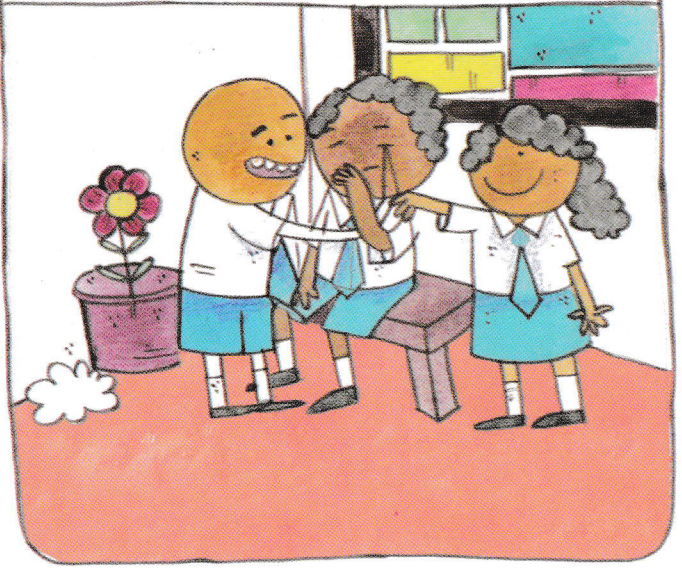
FACT: HOUSEHOLD CHORES ARE MEANT TO BE EQUALLY SHARED



MYTH: REAL MEN DO NOT CRY, THEY ARE TOUGH AND STRONG



FACT: CRYING IS A NATURAL EXPRESSION OF BOTH GRIEF AND JOY



MYTH: FOOTBALL IS A MEN'S SPORT, WOMEN ARE NOT STRONG ENOUGH FOR IT



FACT: INCLUSIVE OPPORTUNITIES NURTURE TALENTS IRRESPECTIVE OF GENDER





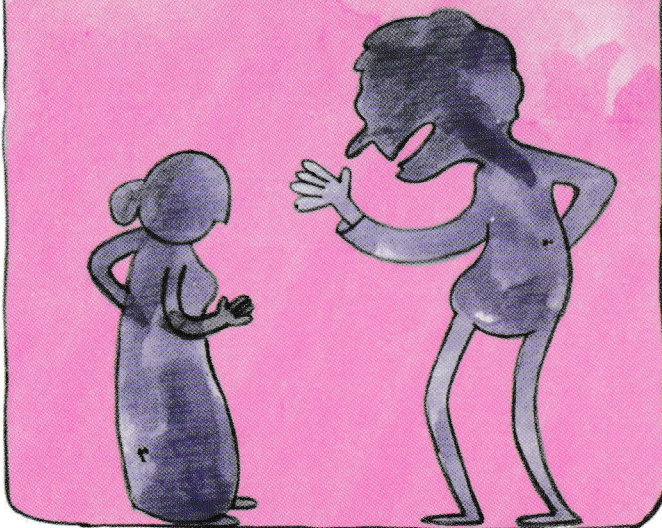
MYTH: GIRLS SHOULD NOT VENTURE OUT AT NIGHT ALONE



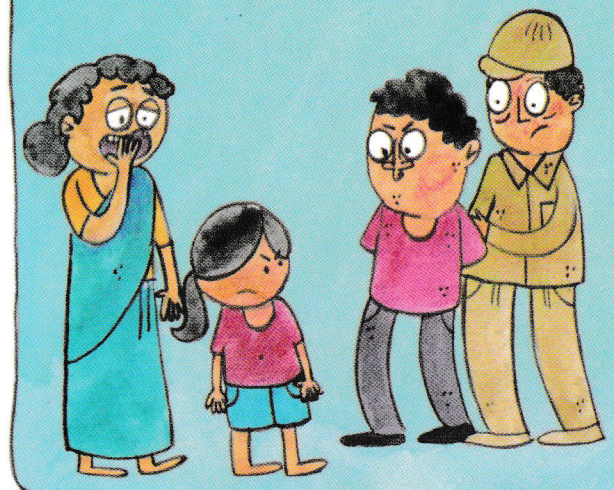
FACT: PUBLIC SPACES ARE MEANT FOR EVERYONE



MYTH: SHE DESERVES IT. SO WIFE BEATING OR VIOLENCE IS JUSTIFIED



FACT: VIOLENCE AGAINST WOMEN IS A CRIME



CONCEPT: ANURITA, RASHMI, NILANTU  
ILLUSTRATION: SHREYA SEN



"HOORAY!!! WE ARE EQUAL"

• NORTH EAST NETWORK

"TO BUILD A SOCIETY THAT UPHOLDS  
GENDER JUSTICE, EQUALITY AND RESPECT  
FOR ALL"

[www.northeastnetwork.org](http://www.northeastnetwork.org)  
[assam@northeastnetwork.org](mailto:assam@northeastnetwork.org)  
Phone : 94350 17824

